

CAMBRIDGE COLLEGE INTERNATIONAL



WELCOME TO CAMBRIDGE COLLEGE INTERNATIONAL



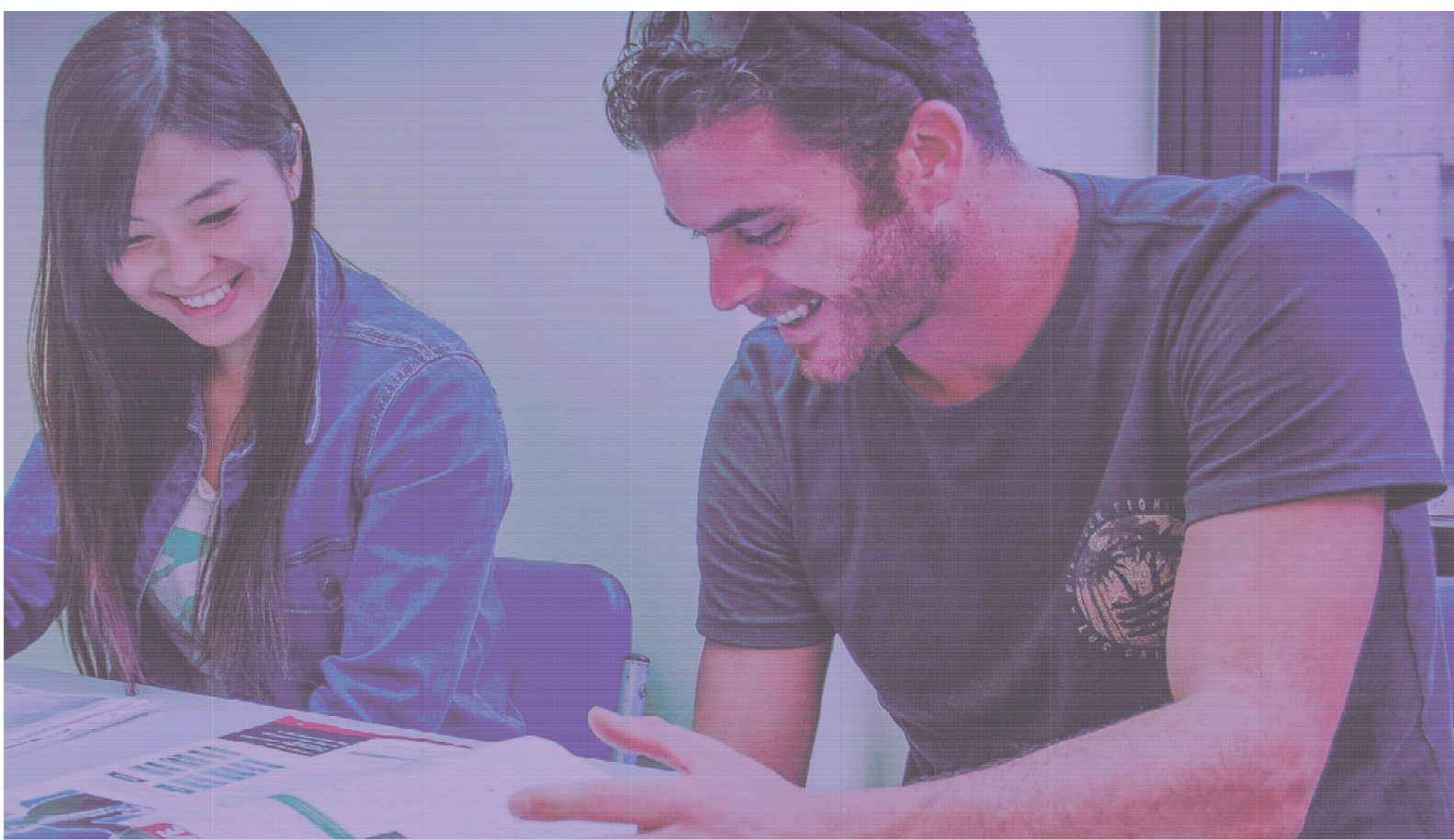
TABLE OF CONTENTS

Did you know that CCI...	03
Welcome to	04
About us	05
English Programs	06
General English	07
English for Academic Purposes	08
IELTS Preparation	09
Student Life in Sydney and CCI	10
Accommodation Services	11
Enrolment Information	12
Location	13
Calendar	14
Tuition Fees	15



DID YOU KNOW THAT CCI...

- *Trained men into employment for office skills in the 1930s.*
- *Re-trained the servicemen after World War II, the Korean War, and the Vietnam War.*
- *Introduced Beauty, Charm and Poise courses in the 1950s.*
- *Was the first to introduce the Assertion Training for women.*
- *Introduced computing technology to students in 1980.*
- *Started one of the first private English language schools in Australia.*
- *Was the first successful private provider to win the NSW Government contract to train non-English speaking background people displaced from the Textile, Clothing, and Footwear industry.*



WELCOME TO

CAMBRIDGE COLLEGE INTERNATIONAL,

a renowned college that will help you improve your professional opportunities and increase your English language skills.

Founded in 1934, Cambridge College International was one of the first private vocational colleges to bring international students to Australia. With our vibrant and long history in education for students from all corners of the world, we have learnt about their most pressing aspirations and concerns when studying and living in a different culture away from home. We have seen thousands of students arrive in Sydney with a backpack full of excitement and question marks; we have seen them work hard to fulfil their objectives, and we keep welcoming them with open hearts because it is what we do best.

Thanks to this experience in educating international students, and to our truly dedicated and passionate staff, CCI is the choice for a journey of learning and fun.

Cambridge College International (CCI) is using Education Agents to recruit students. These agents are third parties and recruiting students on behalf of CCI.



ABOUT US



LONG HISTORY IN EDUCATION

We have been ensuring our students achieve their academic goals since 1934, which makes us industry veterans when it comes to teaching English and vocational courses to international students.



PRIME LOCATION

Our College is in the heart of Sydney CBD, located next to the famous Hyde Park, and buzzing World Square with shopping and entertainment attractions close by. Major attractions such as the Sydney Opera House and Darling Harbour are within reach. Parks, cafes, shopping centres, major libraries, sporting facilities and beaches surround us.



HAVE FUN WHILE LEARNING

Accompanying our formal classes, students are encouraged to participate in excursions and social activities whereby they can interact with their classmates and teachers in a more informal and spontaneous way.



FRIENDLY AND PROFESSIONAL TEACHERS

We actively encourage our students to achieve their goals, and our passionate teachers have the training and experience to make it happen.



WE MAKE YOUR DREAMS COME TRUE

Our supportive admin staff and dedicated teachers are here to help you. From excelling in the art of the English language, to finding proper accommodation, counselling or guidance in professional employment, CCI supports students throughout their course to make their dreams come true.



ENGLISH PROGRAMS

ENGLISH TIMETABLE

We teach English communication in an easy, fun, and social way. We aim to give students the confidence they need to speak English and improve their understanding of the expressions used in an Anglo-Saxon country.

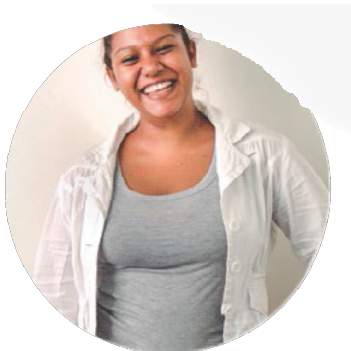
While studying English, students will notice that their ability to communicate in English becomes more natural. As they start thinking in English and using their new skills, fluency improves as well.

Morning Classes (Monday - Thursday)

Lesson 1	8.45am - 10.45am
Break 1	10.45am - 11.00am
Lesson 2	11.00am - 1.00pm
Break 2	1.00 pm - 1.30pm
Lesson 3	1.30pm - 2.30pm

Evening Classes (Monday - Friday)

Lesson 1	4.00pm - 6.00pm
Break 1	6.00pm - 6.30pm
Lesson 2	6.30pm - 8.30pm



GENERAL ENGLISH INTERMEDIATE

“ I like CCI because I can see how fast I improve my English. My teacher is professional and fun, and makes the class very dynamic and enjoyable.

I like this school! ”

- Emilie Chelin, MAURITIUS ISLAND

Q GENERAL ENGLISH

CRICOS CODE: 070205G

The General English course is designed to develop core skills (reading, writing, speaking, and listening) so that students can speak confidently and communicate practically in everyday situations. Levels range from Elementary to Advanced, and students are expected to transition to upper levels every 12 weeks.

MODE OF STUDY: Face to face

ASSESSMENTS: Examinations are conducted monthly and include reading, writing, speaking and listening tests. The assessment is based on the modules studied within the four-week periods. The test is hand-written, except for speaking, which includes presentations, dialogues and peer evaluations. Teachers conduct face-to-face interviews after each test to provide feedback on progress.

DURATION: Minimum 2 weeks - maximum 50 weeks total

ENROLMENT: Any Monday

ENTRY REQUIREMENTS:

- 18 years of age or more when commencing the course
- An **English Placement Test** and oral interview to be done the Friday prior to the commencement day

1

ELEMENTARY LEVEL

- Understand short texts on subjects related to immediate needs
- Produce short simple sentences on familiar topics e.g. weather and holiday
- Maintain a simple conversation on a familiar topic, ask and answer simple questions
- Understand and use a basic range of grammar and vocabulary

2

PRE-INTERMEDIATE LEVEL

- Understand and write with short and simple texts about topics of interest in everyday life
- Maintain longer conversations and develop flexibility in speech delivery, making sure word and tense are correct in short sentences
- Understand and respond correctly in areas that are familiar and follow routine instructions
- Understand and use a higher range of grammar and vocabulary

3

INTERMEDIATE LEVEL

- Understand texts and be confident in comprehending topics which are unfamiliar and specific
- Write texts needed for everyday life with more confidence
- Communicate in most social situations, understand some jokes and convey meaning accurately
- Understand and use a more sophisticated range of grammar and vocabulary

4

UPPER-INTERMEDIATE LEVEL

- Understand general texts and newspaper items with confidence about unfamiliar topics
- Write everyday texts and short essays
- Communicate confidently in most situations, understand jokes and colloquial expressions
- Understand and use a wide range of grammar and vocabulary

5

ADVANCED LEVEL

- Understand complex texts from specialised magazines, newspapers, and the like
- Write comfortably high-level texts like reports and business letters
- Communicate confidently in all scenarios from everyday life to business presentations and meetings
- Comprehend and use rich vocabulary, including phrasal verbs, idioms, colloquial expressions, and synonyms as per different social needs



L ENGLISH FOR ACADEMIC PURPOSES (EAP) CRICOS CODE: 070208D

The EAP course is designed for international students seeking to gain admission into academic centres of different levels, where English is the first language. This course is focused on presentational, writing and referencing skills that are needed to excel in your studies.

DURATION: Minimum 4 weeks - maximum 12 weeks in total

ENROLMENT: Any Monday

ENTRY REQUIREMENTS:

- 18 years of age or more when commencing the course
- English Proficiency of IELTS 5.5 or Upper-Intermediate
- An English Placement Test and oral interview to be done the Friday prior to the commencement day

MODE OF STUDY: Face to face

ASSESSMENTS: Assessment is ongoing, and is a combination of formative and summative testing. Students are encouraged to produce examples of different kinds of writing throughout the course and to organise this work into a student portfolio. In addition, students are also encouraged to keep a learning journal which operates as a tool for reflection. Students are assessed on their presentation skills, ability to participate in a group discussion, use of essay construction techniques, reading and listening skills.

STUDENTS WILL BE ABLE TO...

- ✓ Understand lectures and participate in tutorials easily
- ✓ Write essays, reports and understand academic texts
- ✓ Conduct research on complex topics efficiently
- ✓ Give developed spoken and written opinions on global issues
- ✓ Provide a written description of complex graphs and tables
- ✓ Write short essays and well structured reports
- ✓ Learn and use vocabulary specific to different academic fields



ENGLISH FOR ACADEMIC PURPOSES

“Coming to Australia was the best decision I ever made, it is such a beautiful country! CCI is full of friendly people from different cultures, and classes are very enjoyable which makes me learn super fast. It is a unique life experience!”

- Aitor Navas, SPAIN

Z IELTS PREPARATION

CRICOS CODE: 070206F

The IELTS Exam has become the most preferred English-language proficiency test for non-native speakers. The College's IELTS Preparation Program has been carefully developed following the advice of experienced IELTS teachers, to ensure the program best serves the wide needs of students arriving in Australia.

DURATION: Minimum 4 weeks - maximum 16 weeks in total

ENROLMENT: Any Monday

ENTRY REQUIREMENTS:

- 18 years of age or more when commencing the course
- English Proficiency of IELTS 5.5 or Upper-Intermediate
- An English Placement Test and oral interview to be done the Friday prior to the commencement day

MODE OF STUDY: Face to face

ASSESSMENTS: Assessment during the course is conducted monthly. The course programme incorporates sample practice IELTS tests and tasks to guarantee an authentic IELTS test experience. Each test consists of four components: reading, writing, speaking and listening.

STUDENTS WILL BE ABLE TO...

- ✓ Understand of the IELTS exam's structure
- ✓ Learn to apply strategies to succeed in the IELTS exam
- ✓ Give developed spoken and written opinions on global issues
- ✓ Provide a written description of complex graphs and tables
- ✓ Write short essays and well-structured reports
- ✓ Learn vocabulary and idioms specific to different academic fields

P

IELTS General Module

Meant for those planning to undertake non-academic training or gain work experience.

L

IELTS Academic Module

Intended for those wishing to enrol in universities and other higher education institutions.



IELTS PREPARATION

“ We would recommend CCI to any international student because it has great teachers and very friendly staff ”

- Phornnapat Sariman & Krystle, THAILAND & PHILIPPINES





STUDENT LIFE

W SOCIAL LIFE AT CCI
MAKE THE MOST OF YOUR EXPERIENCE!



EDUCATION FIELD TRIPS

Students can apply the theory learnt in the classroom to everyday life scenarios. Trips are organised in advance, taking into consideration students' budget. One day a month students have the opportunity to explore iconic areas such as **Sydney Aquarium, Bondi Beach, the Sydney Opera House, the Blue Mountains, and the Hunter Valley**, amongst many other attractions.



WORKSHOPS

Workshops and seminars are an invaluable way to learn about an interesting subject. Cambridge College invites industry experts and guest speakers to deliver workshops and talks on topics such as migration and entrepreneurship. This helps our students to gain industry insight and learn about trends in business.



BBQ & FOOD FESTIVALS

Sharing is caring!

In CCI we think that there is no better way to learn about other cultures and traditions than through food. That's why we regularly organise BBQ and food festival events, so that students can share Australian food as well as traditional dishes from their own countries. In doing so, students can practice their English under the supervision of their teachers while learning about other cultural customs in a fun and friendly environment.



**At CCI,
we understand that
education is more than
classrooms, teachers,
and learning outcomes.**

For this reason, we
integrate cultural and
social activities into our
education curriculum.



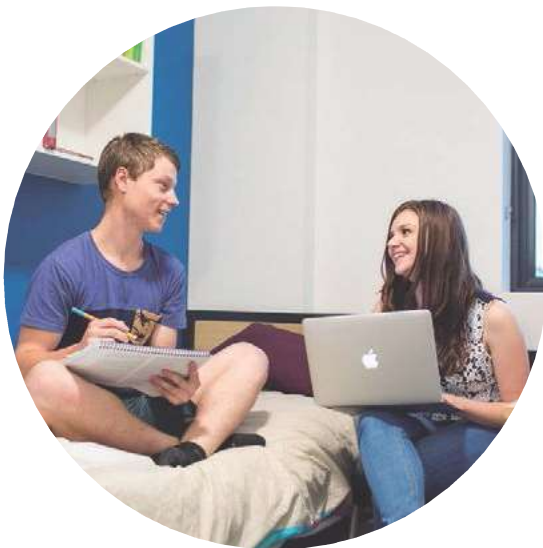
P COUNSELLING SERVICE

The Counselling Service allows students to openly discuss with a professional counsellor in a confidential setting any concerns and problems they may be experiencing. For many students, moving home and studying in a new country can be a big step. Our Student Counsellor is here to help students learn strategies to cope with such challenges, to get the most out of their studies and life in Australia. The services provided are free of charge and students are welcome to see the Counsellor regarding a variety of areas including:

- Studying in a new country
- Difficulties with living arrangements
- Loneliness and separation anxiety
- Self-esteem
- Physical abuse and trauma
- Procrastination
- Family issues
- Interpersonal conflicts
- Relationship advice
- Depression
- Finding Employment
- Cultural or ethnic concerns
- Achievement conflicts
- Problems with drugs & alcohol



For more information email:
studentservices1@cci.nsw.edu.au



; ACCOMODATION SERVICES

CCI has partnerships with various accommodation providers, ranging from Homestay to House-share.

Homestay involves living in an Australian household and enables students to get a closer experience in the Australian lifestyle and to practice the English language routinely. A variety of single and twin rooms are available.

House-share is the preferred option for those who already have experience living on their own or are seeking more independence. House rental prices depend on whether students opt for a single or a shared-room. As Sydney is one of the most multicultural cities worldwide, students are likely to share a house with at least two or three different nationalities at a time.

For more information, visit our website www.cci.nsw.edu.au or contact marketing@cci.nsw.edu.au

A WORK WHILE YOU STUDY

Working while you study in Australia can help complement your study and living experience. There are a number of reasons you might want to undertake part time work while studying in Australia, including assisting with living expenses and gaining work experience in your study area.

Most student visas allow you to work for up to 40 hours every two weeks while your course is in session, and unrestricted hours during any scheduled course break, but before you undertake any paid work you need to make sure your visa allows you to work. Find out more at the [Department of Home Affairs](http://www.homeaffairs.gov.au) website.



A APPLICATION AND ADMINISTRATION FEES

- **Standard application fee of \$200** (includes processing of application form, E-CoE, Letter of Offer, and receipts)
- **Learning material fee of \$100** per English course or level (12 weeks) includes textbook and daily photocopies
- **Extra administration fees of \$40** will apply whenever an applicant wishes to amend enrolment details, which requires the creation of a new COE

E ENTRY DATES AND ORIENTATION SESSIONS

English Course intakes are every Friday before course commencement on the following Monday.

Orientation takes place on the Friday before course commencement on the following Monday.

R RECOGNITION OF PRIOR LEARNING

RPL is an assessment process that enables any student applying to study at CCI to gain recognition of skills and knowledge regardless of how they were achieved. This may include formal or informal learning, work experience, or general life experience.

The evidence to demonstrate competency in the units of the course may include:

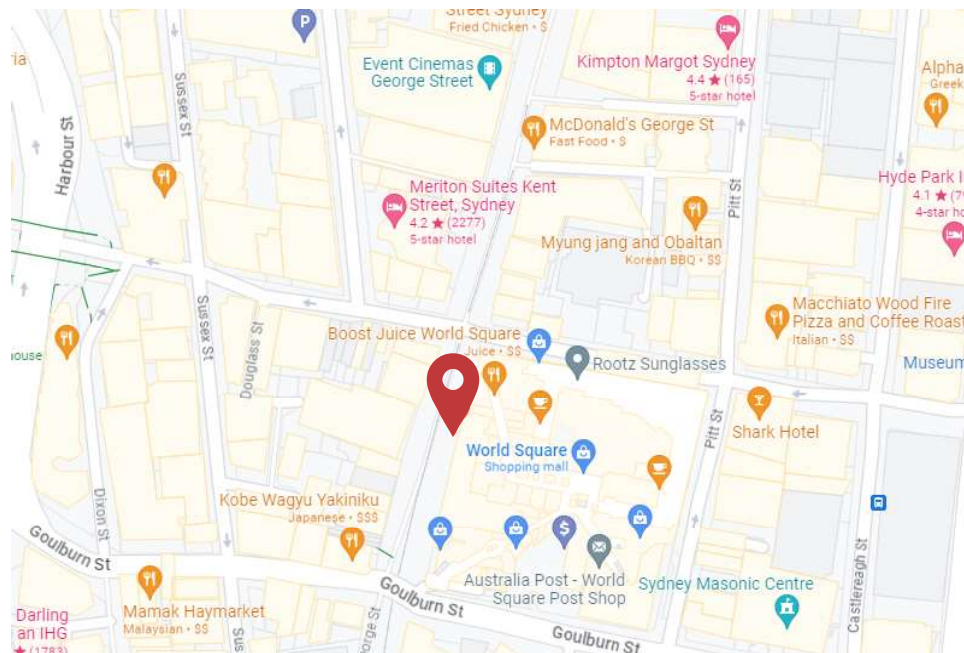
- ✓ Certificate
- ✓ References from past employers
- ✓ Testimonials from clients and work samples

Where RPL is granted you do not have to participate in further training and assessment for skills and knowledge that you already possess. There is a fee for RPL assessment and further information regarding RPL is available on request.



LOCATION

Suite 19, 650 George St
Sydney NSW 2000



ACADEMIC CALENDAR 2023

JANUARY						
MO	TU	WE	TH	FR	SA	SU
						1
2	3	4	5	6	7	8
9	10	11	12	13	14	15
16	17	18	19	20	21	22
23	24	25	26	27	28	29
30	31					

FEBRUARY						
MO	TU	WE	TH	FR	SA	SU
		1	2	3	4	5
6	7	8	9	10	11	12
13	14	15	16	17	18	19
20	21	22	23	24	25	26
27	28					

MARCH						
MO	TU	WE	TH	FR	SA	SU
		1	2	3	4	5
6	7	8	9	10	11	12
13	14	15	16	17	18	19
20	21	22	23	24	25	26
27	28	29	30	31		

APRIL						
MO	TU	WE	TH	FR	SA	SU
					1	2
3	4	5	6	7	8	9
10	11	12	13	14	15	16
17	18	19	20	21	22	23
24	25	26	27	28	29	30

MAY						
MO	TU	WE	TH	FR	SA	SU
1	2	3	4	5	6	7
8	9	10	11	12	13	14
15	16	17	18	19	20	21
22	23	24	25	26	27	28
29	30	31				

JUNE						
MO	TU	WE	TH	FR	SA	SU
			1	2	3	4
5	6	7	8	9	10	11
12	13	14	15	16	17	18
19	20	21	22	23	24	25
26	27	28	29	30		

JULY						
MO	TU	WE	TH	FR	SA	SU
					1	2
3	4	5	6	7	8	9
10	11	12	13	14	15	16
17	18	19	20	21	22	23
24	25	26	27	28	29	30
31						

AUGUST						
MO	TU	WE	TH	FR	SA	SU
		1	2	3	4	5
6	7	8	9	10	11	12
13	14	15	16	17	18	19
20	21	22	23	24	25	26
27	28	29	30	31		

SEPTEMBER						
MO	TU	WE	TH	FR	SA	SU
				1	2	3
4	5	6	7	8	9	10
11	12	13	14	15	16	17
18	19	20	21	22	23	24
25	26	27	28	29	30	

OCTOBER						
MO	TU	WE	TH	FR	SA	SU
						1
2	3	4	5	6	7	8
9	10	11	12	13	14	15
16	17	18	19	20	21	22
23	24	25	26	27	28	29
30	31					

NOVEMBER						
MO	TU	WE	TH	FR	SA	SU
		1	2	3	4	5
6	7	8	9	10	11	12
13	14	15	16	17	18	19
20	21	22	23	24	25	26
27	28	29	30			

DECEMBER						
MO	TU	WE	TH	FR	SA	SU
				1	2	3
4	5	6	7	8	9	10
11	12	13	14	15	16	17
18	19	20	21	22	23	24
25	26	27	28	29	30	31

 ENGLISH CLASSES

 PUBLIC HOLIDAYS

Intakes: GE / EAP / IELTS - Every Monday

NSW Public Holidays 2023

New Year's Day Mon 2 Jan 2023, Australia Day Thu, 26 Jan 2023, Good Friday Fri, 7 Apr 2023,

Easter Saturday, 8 Apr 2023, Easter Sun, 9 Apr 2023, Easter Monday Mon, 10 Apr 2023, Anzac Day Tue, 25 Apr 2023,

King's Birthday Mon, 12 June 2023, Labour Day Mon, 2 Oct 2023, Christmas Day Mon, 25 Dec 2023, Boxing Day Tue, 26 Dec 2023,

FEES 2023

GENERAL ENGLISH - EAP - IELTS

COURSE CODE	COURSE	CRICOS	DURATION	FEES*	
			(In weeks)	Material Fee (per level)	Per Week
	General English Beginner to Advanced	0701205G	12 - 60 Weeks	\$100	\$200

GENERAL ENGLISH - EAP - IELTS

	English for Academic Purposes (Upper-Intermediate to Advanced)	070208D	24 Weeks	\$100	\$200
--	--	---------	----------	-------	-------

GENERAL ENGLISH - EAP - IELTS

	IELTS Preparation (Upper-Intermediate to Advanced)	070206F	24 Weeks	\$100	\$200
--	--	---------	----------	-------	-------

- * In addition to tuition fees, enrolment fee \$200 is applicable at the time of initial application and it is non-refundable.
- Course fees remain unchanged for the duration of the CoE.
- Please refer to CCI's Refund Policy for full terms and conditions.

CAMBRIDGE COLLEGE INTERNATIONAL

We enrich the lives of people



ENGLISH COURSES

GENERAL ENGLISH / EAP / IELTS



www.cci.nsw.edu.au